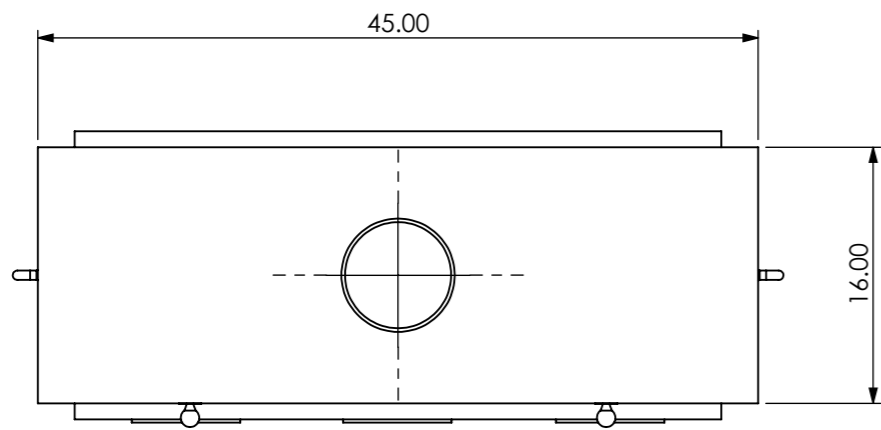
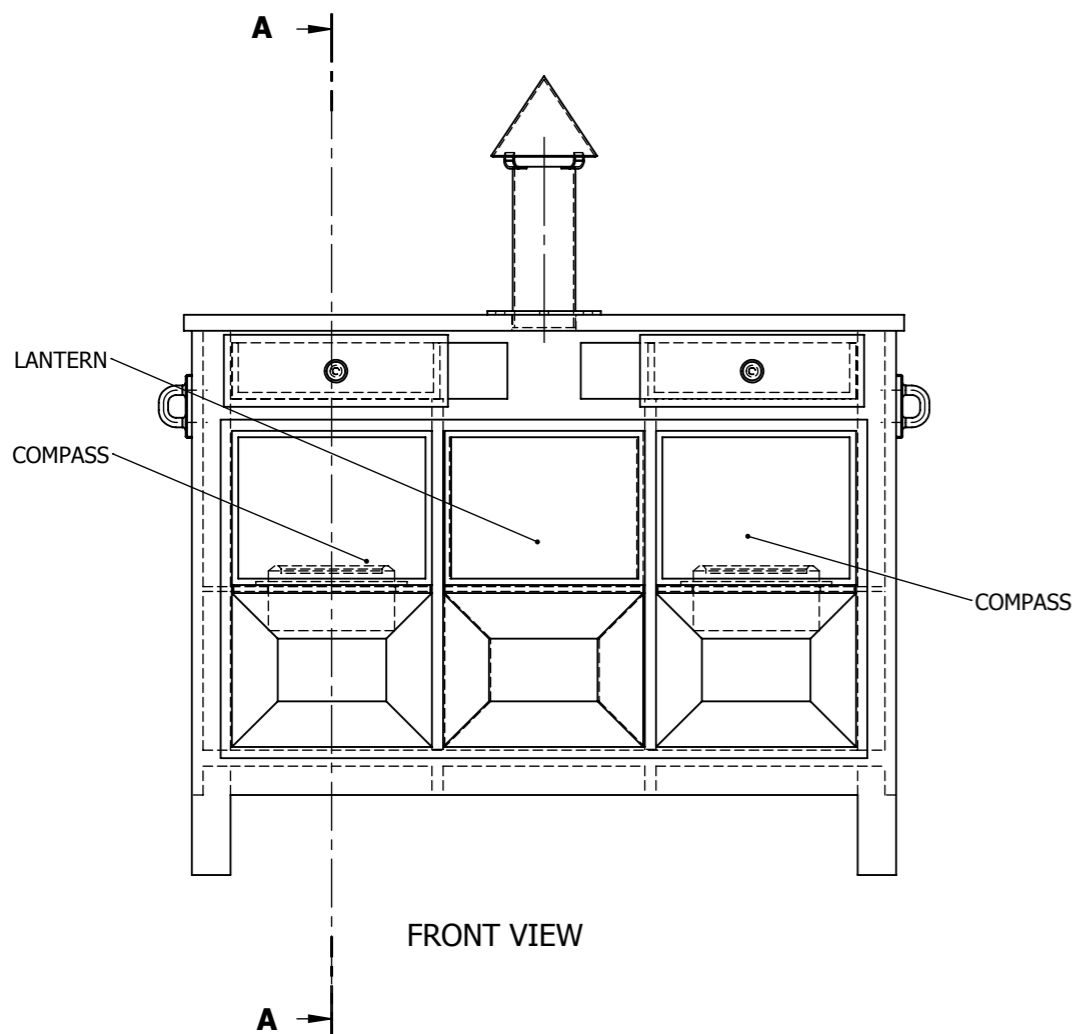
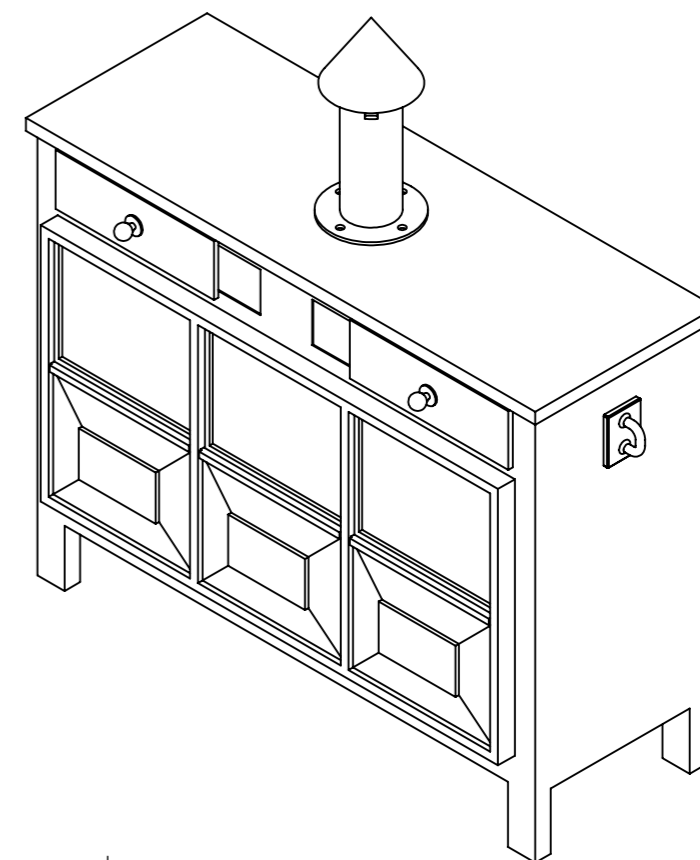


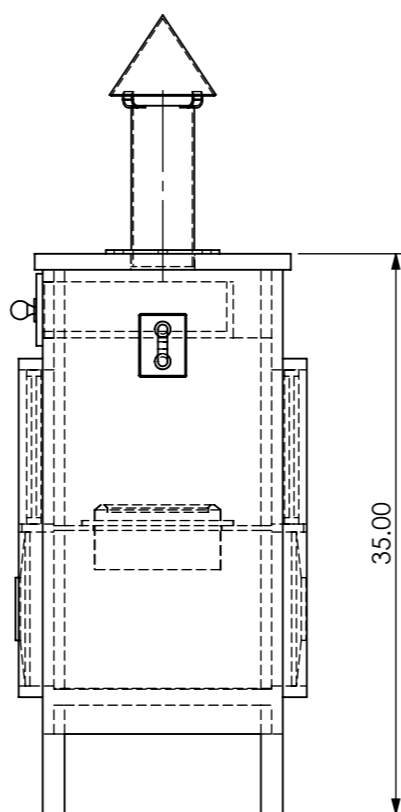
THE BINNACLE IS A LIGHTWEIGHT ITEM THAT WAS NOT FIXED IN PLACE. WHEN USING THE CAPSTAN FOR HAULING UP THE ANCHOR THE BINNACLE WAS MOVED OUT OF THE WAY. WHEN THE CAPSTAN WAS USED AT SEA, SHORTER CAPSTAN BARS WERE USED, AND THE BINNACLE WAS LEFT IN PLACE.



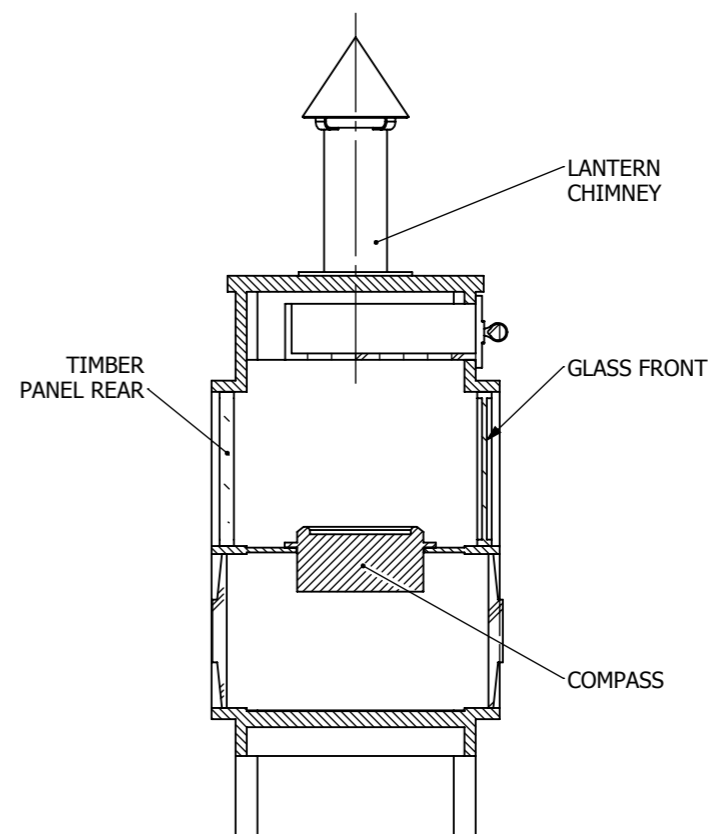
PLAN VIEW



FRONT VIEW



SIDE VIEW



SECTION A - A

**BINNACLE
ARRANGEMENT**

© COPYRIGHT MSW

SCALE:1:12

A3