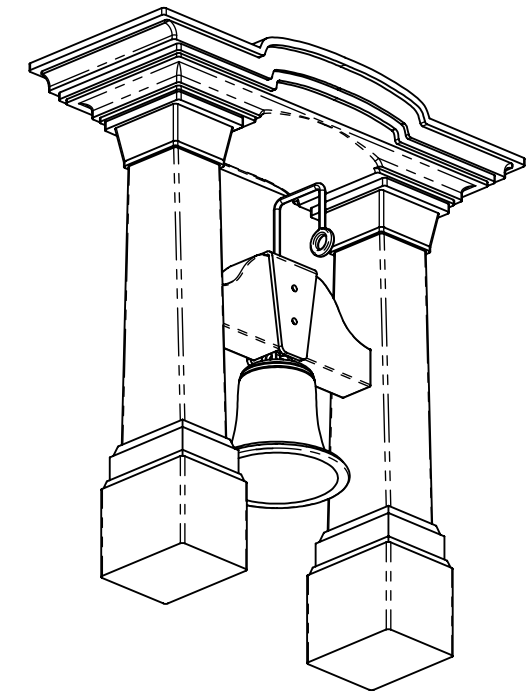
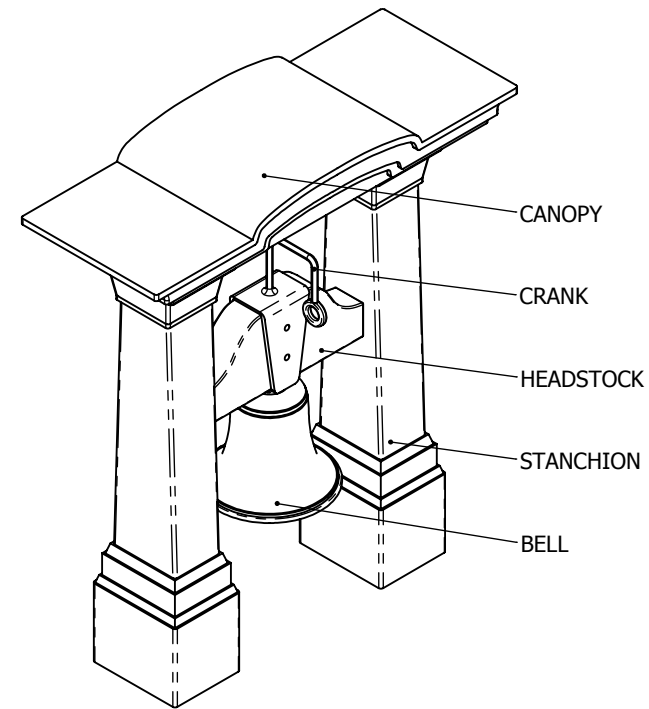
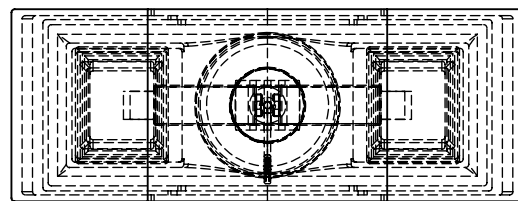


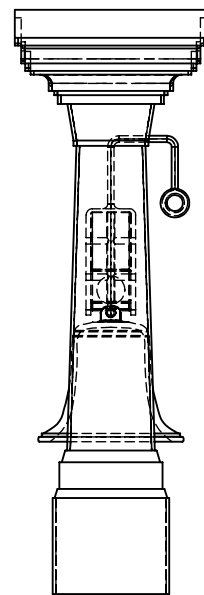
THE BELFRY DESIGN VARIED FROM YARD TO YARD AND SHIP TO SHIP. THE STANCHIONS ARE DECORATIVE TO A GREATER OR LESSER DEGREE. THE HEADSTOCK WAS EITHER AS DRAWN OR 2 NARROWER ANGLED BANDS WERE FITTED. THE CRANK WAS NOT ALWAYS FITTED, INSTEAD A ROPE WAS ATTACHED TO THE CLAPPER OF THE BELL. SOMETIMES 2 WOODEN CLEATS WERE FITTED TO THE STANCHIONS FOR THE FORE TOPGALLANT YARD BRACES.



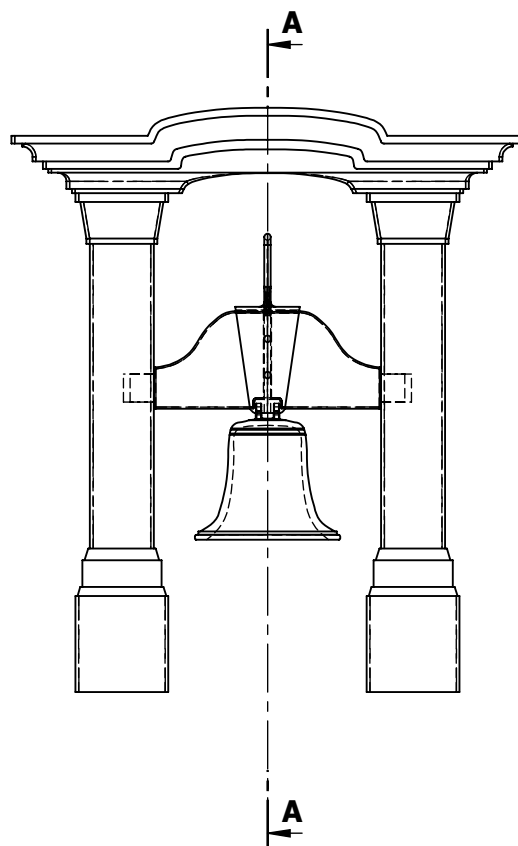
SCRAP VIEWS



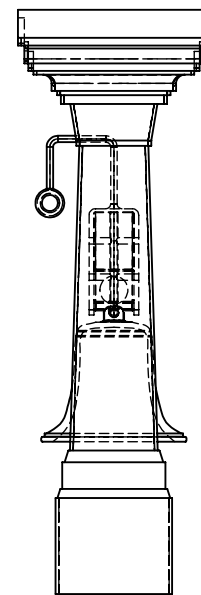
PLAN VIEW



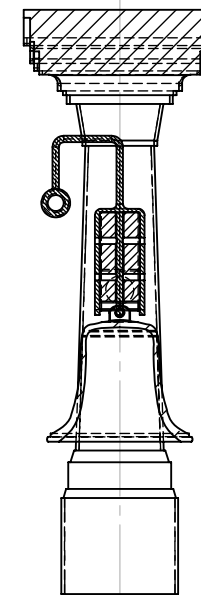
SIDE VIEW



FRONT VIEW



SIDE VIEW



SECTION A - A

**TWIN POST BELFRY
ARRANGEMENT**

© COPYRIGHT MSW

SCALES : 1:12